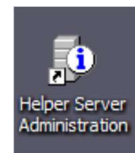


## Configuring Helper with OrderConnect e-Prescribing

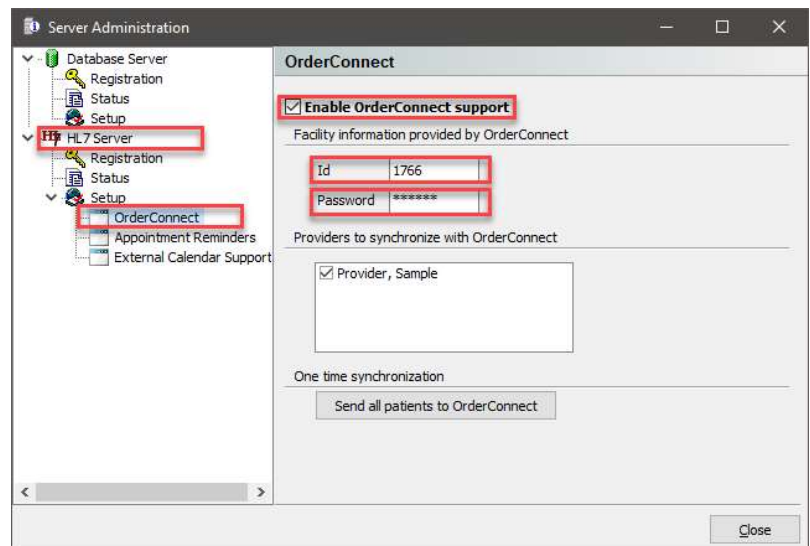
Once you have registered Helper for use with OrderConnect, you will need to configure Helper to send your demographic data to OrderConnect through the InfoChannel. To do this, you'll need to have the Helper Server Administration utility installed. If you are running Helper in a networked environment, you will already have this utility. It should be located on the desktop of your server computer. If you already have the Helper Server Administration tool please proceed to step 1, below.

The Helper Server Administration icon looks like this:



If you are running a stand-alone version of Helper, you will need to install this utility which can be downloaded from our website [here](#). The installation wizard will guide you through the installation process. When you are going through the installation wizard, please choose that this is NOT the first-time installing Helper on this computer.

1. Once you have located or installed the Helper Server Administration utility, double-click on the desktop shortcut to open it. On the left side of the screen you will see an option for HL7 Server, which when expanded will reveal an option for OrderConnect:
2. Make sure the "Enable OrderConnect Support" box is checked.
3. Enter the OrderConnect Fac ID & Fac Code that was provided in the OrderConnect welcome email for the 'Id' and 'Password'.
4. The Incoming file path should already be filled out with the correct location and will not need to be changed.
5. Select the provider(s) you wish to sync with OrderConnect and click on "Send all patients to OrderConnect".



Once that process has completed, OrderConnect will process this batch of patients within 24 hours. After that point, any new patients entered into Helper will automatically synchronize with OrderConnect at periodic points throughout the day.